



Search

text size: T T T

H&LP Office

Scenic Byways

- [Homepage](#)
- [Other page 1](#)
- [Other Page 2](#)

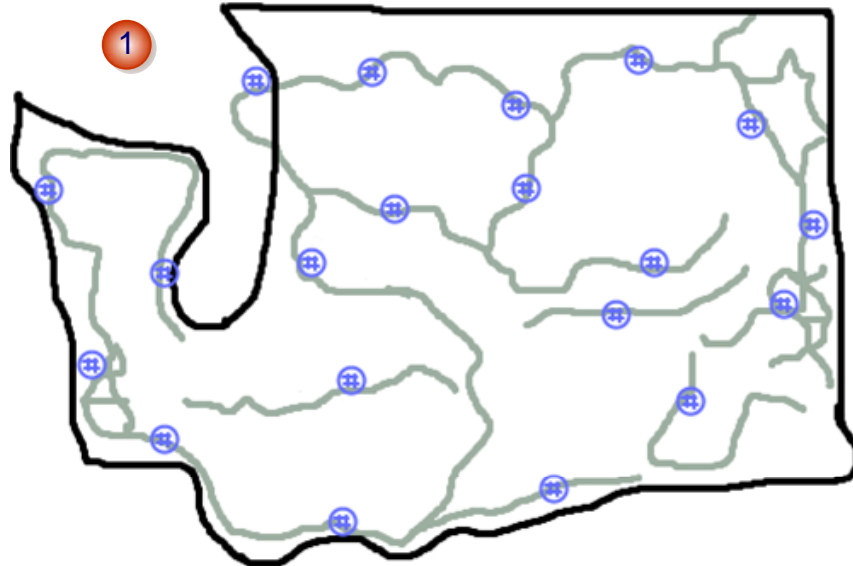
H&LP

- [H&LP Home](#)
- [Contact](#)
- [Regional Engineers](#)

Contacts

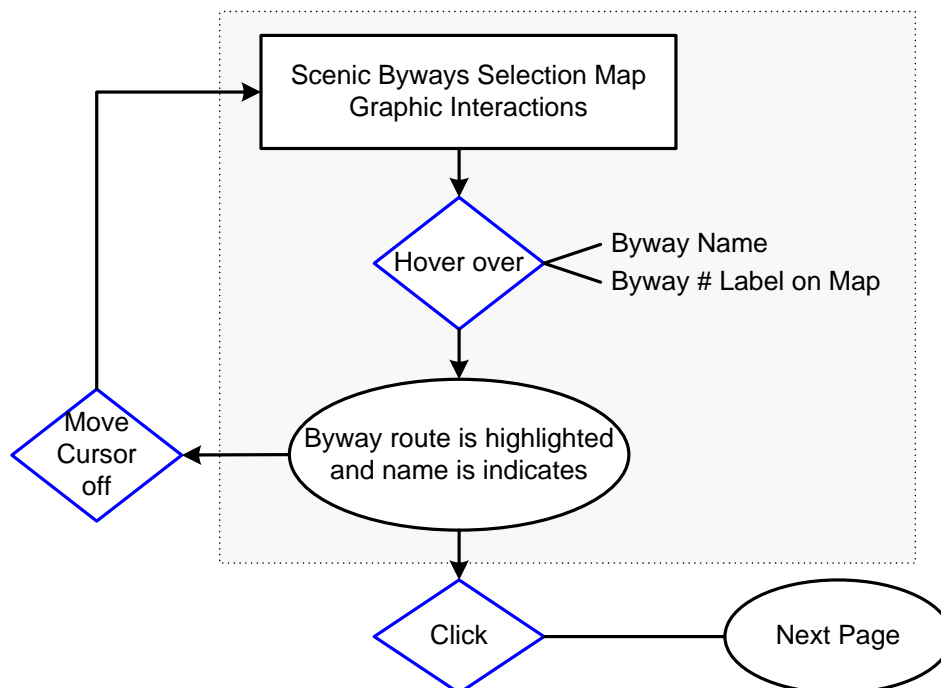
Title

- [E-mail](#)
- phone



List of Byways on Map with corresponding numbers

1 Interactive graphic map that will highlight the route a particular byway either from the map label or the list of byways below the map.





Search

text size: T T T

H&LP Office

Scenic Byways

- [Homepage](#)
- [Other page 1](#)
- [Other Page 2](#)

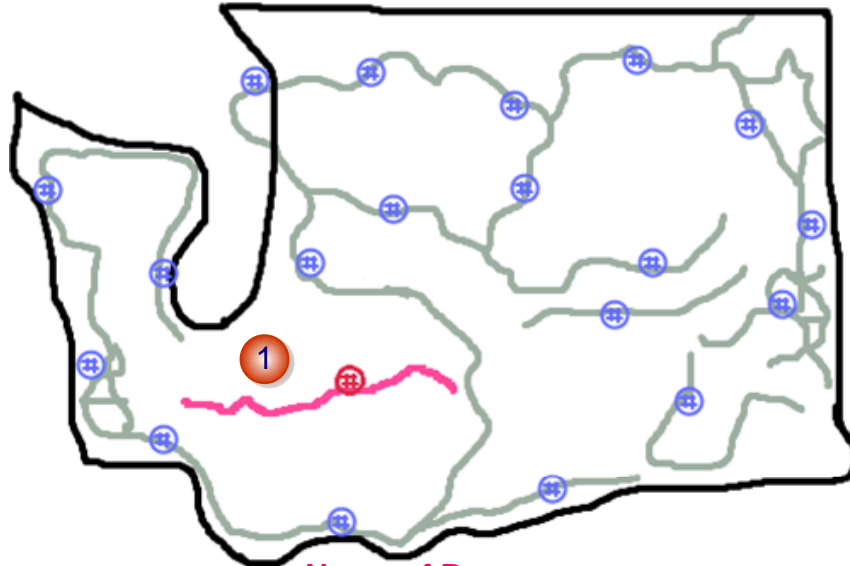
H&LP

- [H&LP Home](#)
- [Contact](#)
- [Regional Engineers](#)

Contacts

Title

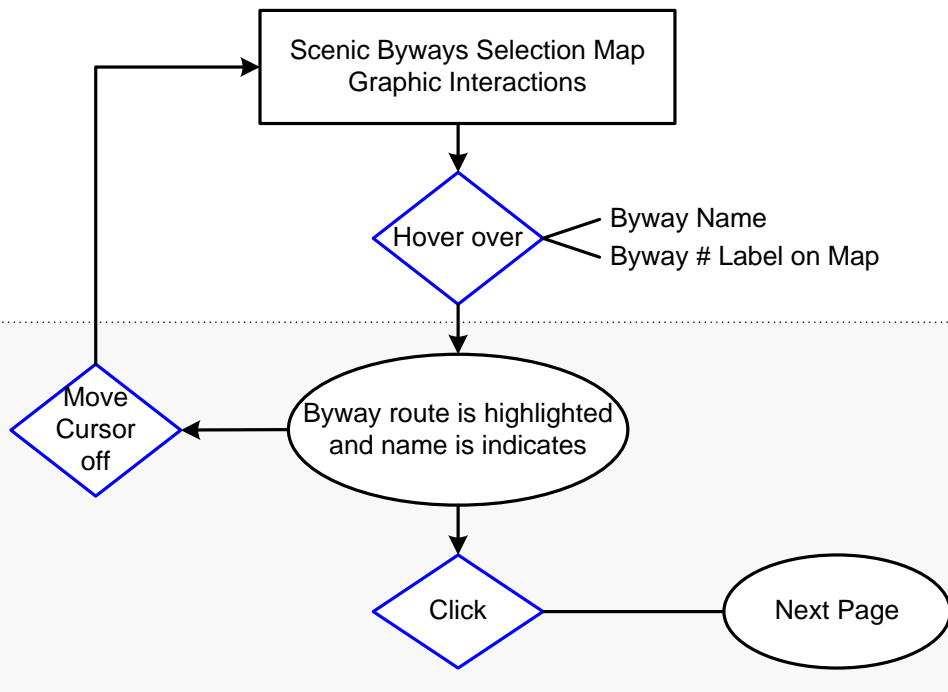
- [E-mail](#)
- phone



Name of Byway

List of Byways on Map with corresponding numbers

1 Byway that is hovered over will change colors and the name of the byway will appear (perhaps with other info?) Clicking while highlighted will open the specific byway's page.





Search

text size: T T T

H&LP Office

- [Homepage](#)
- [Other page 1](#)
- [Other Page 2](#)

H&LP

- [H&LP Home](#)
- [Contact](#)
- [Regional Engineers](#)

Contacts

Title

- [E-mail](#)
- phone

Scenic Byways

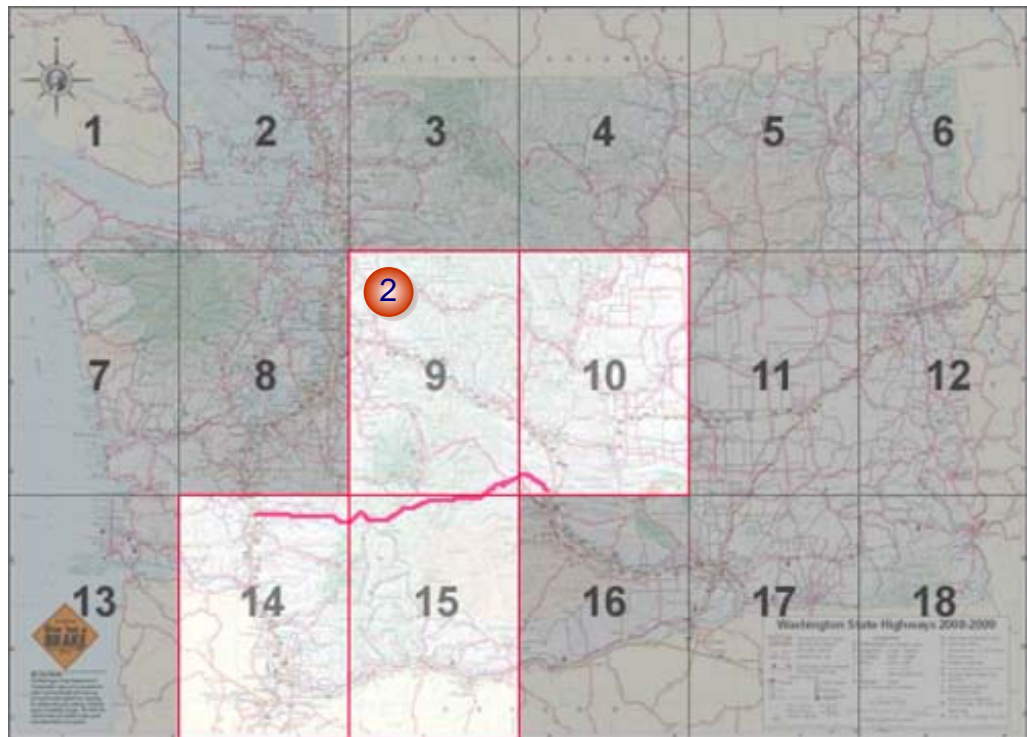
Name of Byway

1

Information about Scenic Byway

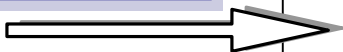
Map Downloads of the Scenic Byway

[Download Entire Map](#)



1 Interactive map is not included here, but that might be an option. Especially if the selected byway can be permanently highlighted in a different color than the hover color. Is this feasible? How much extra work and maintenance would it require.

2 Highlight quadrants of the map that include the byway. Can download all quadrants. Maybe just have the relevant quads



[View the whole state map](#)

2 Third possibility would be to have individual maps of for each of the local Byways.